

LEASEHOLD - SHARE OF



Apartment

# FLAT 83, MARSHAM COURT MARSHAM STREET, LONDON, SW1P 4LA

Asking Price

£750,000

FEATURES



**TUCKERMAN**  
ESTATE AGENTS  
PROPERTY PROFESSIONALS

# 1 Bedroom Apartment located in London

Call us on

020 7222 5510

[info@tuckermanresidential.co.uk](mailto:info@tuckermanresidential.co.uk)

[www.tuckermanresidential.co.uk](http://www.tuckermanresidential.co.uk)

Charming one bedroom apartment in central Westminster.

Council Tax Band

E

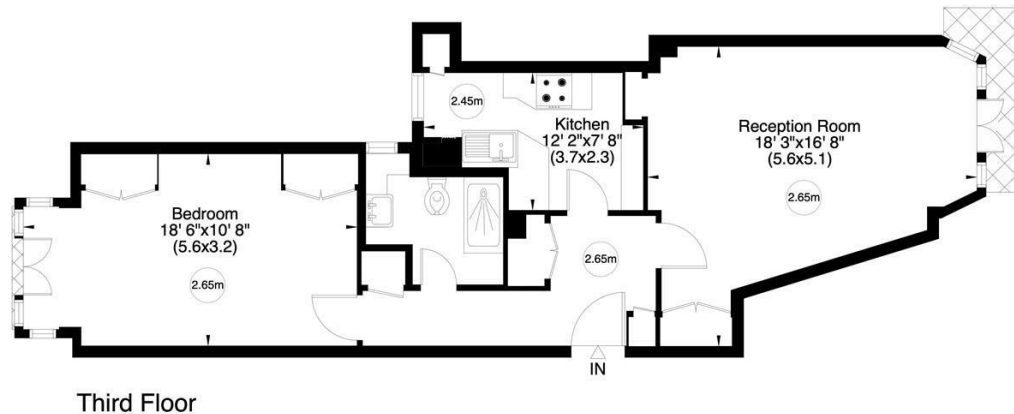
## Marsham Court, SW1

Gross internal area (approx.)

60 Sq m (645 Sq ft)

For identification only, Not to Scale

[www.virtualtours.london](http://www.virtualtours.london)



[www.virtualtours.london](http://www.virtualtours.london)

Not to scale, for guidance only and must not be relied upon as a statement of fact. All measurements and areas are approximate only (and have been prepared in accordance with the current edition of the RICS Code of Measuring Practice).

Energy Efficiency Rating		Current	Potential
<i>Very energy efficient - lower running costs</i>			
(92 plus) <b>A</b>			
(81-91) <b>B</b>			
(69-80) <b>C</b>			
(55-68) <b>D</b>			
(39-54) <b>E</b>			
(21-38) <b>F</b>			
(1-20) <b>G</b>			
<i>Not energy efficient - higher running costs</i>			
<b>England &amp; Wales</b>		EU Directive 2002/91/EC	

Agents Note: Whilst every care has been taken to prepare these particulars, they are for guidance purposes only. All measurements are approximate and are for general guidance purposes only and whilst every care has been taken to ensure their accuracy, they should not be relied upon and potential buyers are advised to recheck the measurements.

**TUCKERMAN**  
ESTATE AGENTS  
PROPERTY PROFESSIONALS